



UNIVERSITY OF LEEDS



# THE BIKE HUB

BROUGHT TO YOU BY UNIVERSITY OF LEEDS AND LEEDS BECKETT UNIVERSITY



# Sustainability at the University of Leeds

*At the University of Leeds, we are committed to embedding sustainability in everything we do.*

*To us, sustainability means creating value for society by taking responsibility for our economic, cultural, social and environmental impacts.*

*We draw on the diverse expertise of our students, staff and partners to collaborate in finding sustainable solutions to global challenges.*



*The Sustainable Garden at the University of Leeds*



## University Principles on the Climate Crisis

1. We are working towards securing a net zero carbon footprint by 2030.
2. We will ensure that we consider sustainability and a zero carbon future in decision-making.
3. We will increasingly reorient our research and teaching away from the fossil fuel sector.
4. We want everyone to have the opportunity to learn about sustainability through our teaching, educational engagement and outreach.
5. We will continue to work with Leeds City Council and other partners, towards making Leeds a net zero carbon city by 2030.
6. We will encourage and support the City Council and others to develop a sustainable transport system for the city region.
7. We will continue to invest responsibly.





## Sustainable Transport & Active Travel

- We encourage all students, staff and visitors to walk, cycle and use public transport wherever possible
- We work with various partners around the city (Leeds City Council, West Yorkshire Combined Authority, charities, bike shops, bus and train companies, Leeds Cycling Campaign...) to improve infrastructure and change commuting behaviours



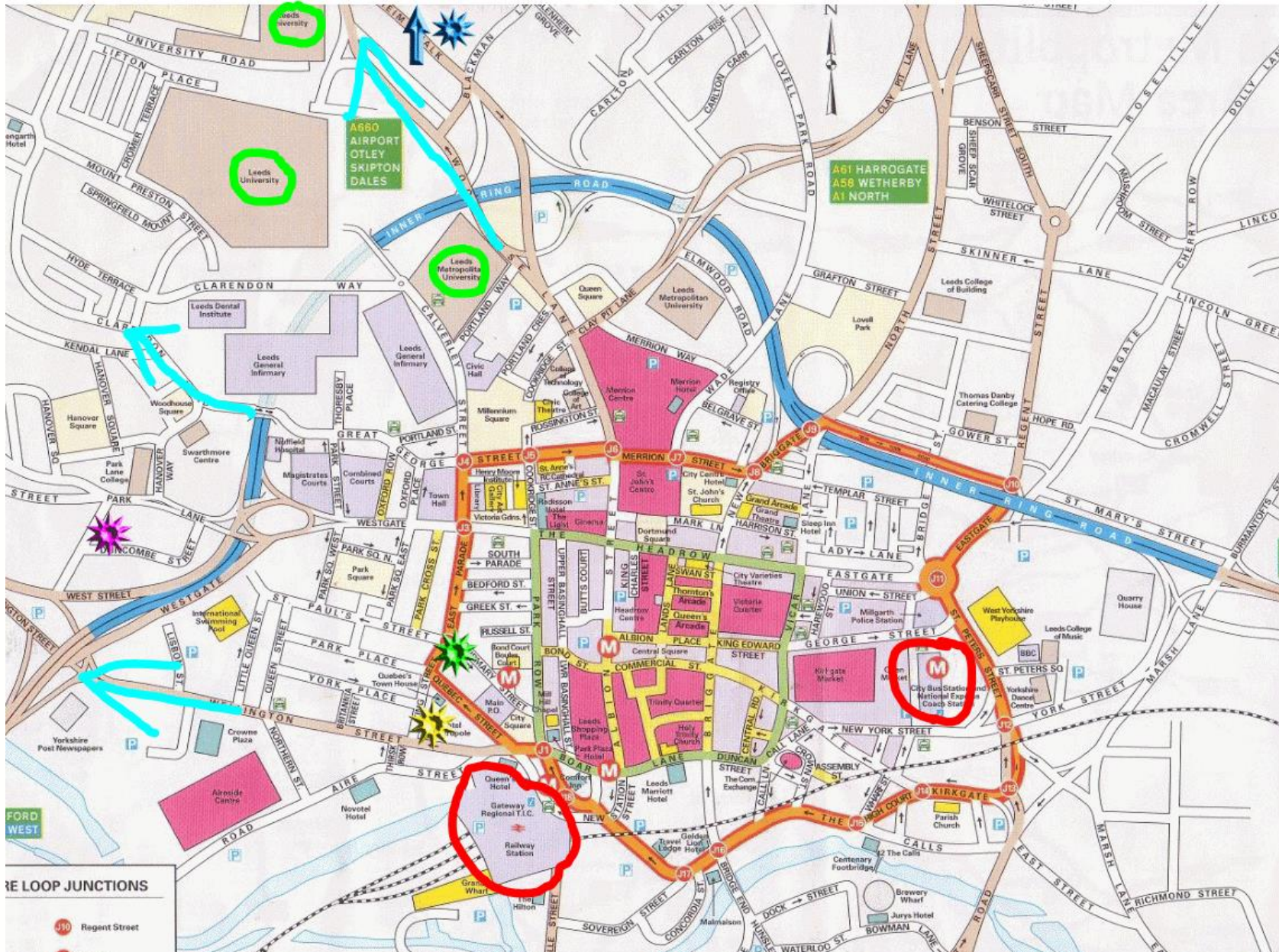


## Leeds city map

**VERDE:** University of Leeds & Leeds Beckett University

**ROSSO:** Stations (bus & train)

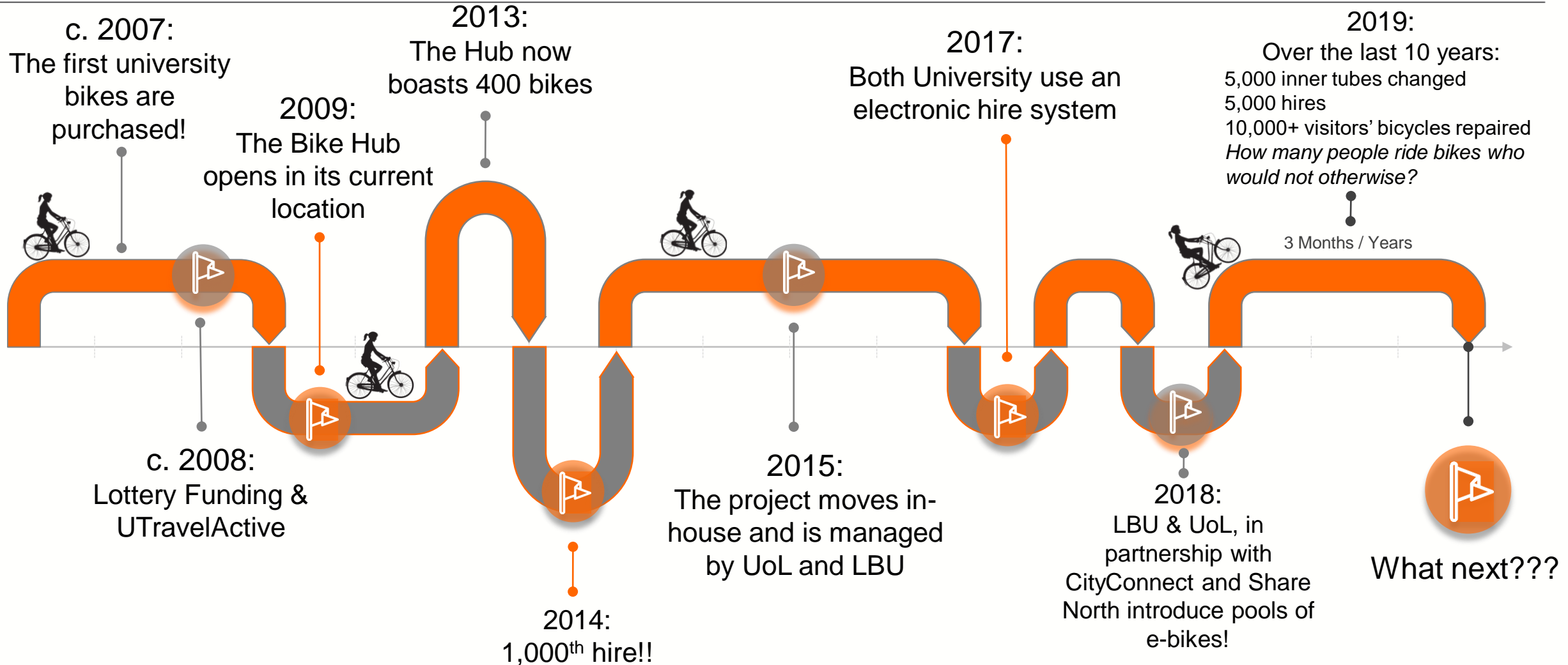
**(BIANCHI) CELESTE:** Main roads towards student neighbourhoods



# Bike Hub – Una Corta Storia



UNIVERSITY OF LEEDS





# Bike Hub: The Beginnings



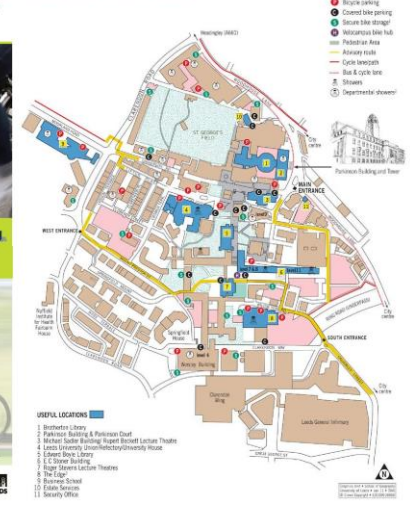
The first partner organisations

## CYCLING AND WALKING MAP

Routes and facilities for students and staff



## CAMPUS CYCLING MAP

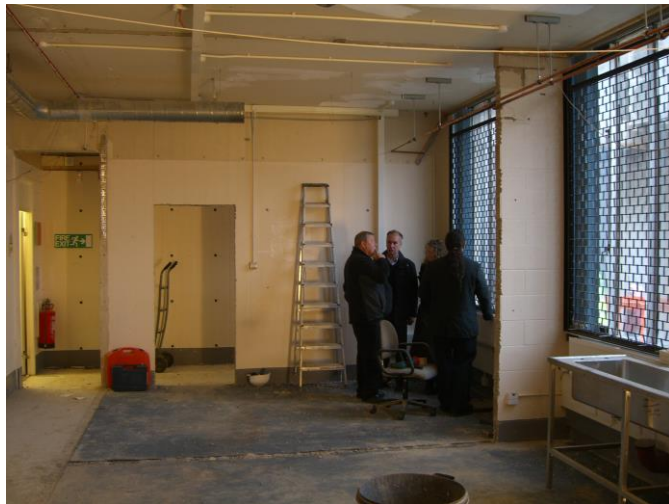


**10 good reasons to walk or cycle to university**

- For most universities, a bicycle is a faster way to get to university.
- Walking or cycling helps you to be more alert and more productive.
- Walking or cycling helps you to be more fit and healthy.
- Walking or cycling helps you to be more environmentally friendly.
- Walking or cycling helps you to be more socially responsible.
- Walking or cycling helps you to be more financially responsible.
- Walking or cycling helps you to be more academically responsible.
- Walking or cycling helps you to be more personally responsible.
- Walking or cycling helps you to be more socially responsible.
- Walking or cycling helps you to be more financially responsible.
- Walking or cycling helps you to be more academically responsible.
- Walking or cycling helps you to be more personally responsible.

**Useful contacts**

- Leeds City Council**  
www.leeds.gov.uk
- sustrans**  
www.sustrans.org.uk
- University of Leeds**  
www.leeds.ac.uk
- Leeds NHS Primary Care Trust**  
www.leedsnhs.uk
- Leeds City Council**  
www.leeds.gov.uk
- sustrans**  
www.sustrans.org.uk
- University of Leeds**  
www.leeds.ac.uk
- Leeds NHS Primary Care Trust**  
www.leedsnhs.uk





## Cycle hires:

- On average: 450 bike hires a year
- Over half of hires are from international students
- A fleet of 350 hybrid bikes
- 4 electric bikes available for staff
- 3 folding bikes also on offer



*Electric Bike*



*Hybrid Bike*



*Folding Bike*





## Repairs and visits

- On average, about 5,000 people a year visit the bike Hub
- Over half of visits are for cycling advice and especially maintenance help
- Parts are sold at trade price, labour is always free
- We show and teach people how to look after their bikes





## Volunteering

- The Hub only has one full-time worker; the rest of mechanics are volunteers from all ages, sexes, and origins
- In addition to mechanical skills, volunteers gain a lot from the interaction of many different people at the Hub
- Importantly, it goes to show that cycling is not just for white males!

*Student Action for Refugees 2020*





## City-wide work

- The Hub regularly participate in community events
- Additionally, the Hub is in regular contact with infrastructure stakeholders, such as the City Council and community groups



Clean Air Day 2017



Let's Ride Leeds 2019



Cycle Safety Event 2018



Grazie mille per la vostra attenzione!

If you have questions, please get in touch:

[bikehub@leeds.ac.uk](mailto:bikehub@leeds.ac.uk)  
[sustainability@leeds.ac.uk](mailto:sustainability@leeds.ac.uk)